

The Global Environmental Management Initiative (GEMI)

Collecting the Drops: A Water Sustainability Planner

<http://www.gemi.org/waterplanner>



The screenshot shows a Microsoft Internet Explorer browser window displaying the GEMI website. The browser's address bar shows the URL <http://www.gemi.org/waterplanner/>. The website header features the GEMI logo and the title "Collecting the Drops: A Water Sustainability Planner". Below the header is a navigation menu with links for Home, Introduction, Module 1: Water Use and Impacts, Module 2: Water Management Risk Assessment, Module 3: Case Examples and Links, Calculators, and Reference. The main content area includes a "User Login" section with buttons for "Existing Users" and "New Users", a "Welcome to Collecting the Drops: A Water Sustainability Planner tool!" message, and a paragraph of introductory text. A small image of a water tap is shown next to the text. On the right side, there is a "Water Planner Tool" icon with a "Go" button and a section titled "Other Important GEMI Tools" with a list of links.

GEMI® Collecting the Drops: A Water Sustainability Planner

Home Introduction Module 1: Water Use and Impacts Module 2: Water Management Risk Assessment Module 3: Case Examples and Links Calculators Reference

Collecting the Drops: A Water Sustainability Planner Home

User Login Existing Users New Users

Welcome to *Collecting the Drops: A Water Sustainability Planner* tool!

Business risk and opportunity assessments have evolved to include analyses of water use, impact of use and "license to operate" considerations. These assessments are used to create short- and long-term water sustainability strategies. *Collecting the Drops: A Water Sustainability Planner* is a tool segregated into three Modules that guides a facility user through: the process of assessing the facility's specific water uses/needs in comparison to the availability of water in the region; the impacts these operations pose on the available water resources; and the identification of factors that may pose a risk on the operation's ability to produce. Case examples of how GEMI members have identified opportunities to efficiently manage water resources are also provided.

The facility case for understanding water use... is becoming an essential part of business assessments.

Other Important GEMI Tools

- Connecting the Drops Towards Creative Water Strategies
- Exploring Pathways to Sustainable Enterprise... SD Planner™
- Transparency: A Path to Public Trust



GEMI®

January 2007

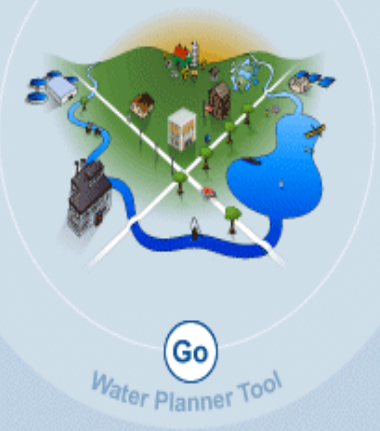
What is GEMI?

💧 39 Member Companies:

- Representing more than 22 Business Sectors
- Annual Sales: almost \$1 Trillion USD
- Global Headcount: more than 2.5 million
- Number of Manufacturing Facilities Worldwide: more than 3,000

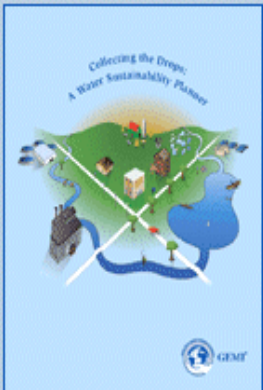
💧 Non-profit 501(c)(3) Organization

💧 Not an Advocacy Organization



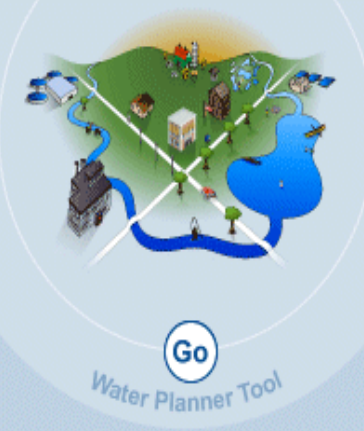
Other Important GEMI Tools

- [*Connecting the Drops Towards Creative Water Strategies*](#)
- [*Exploring Pathways to Sustainable Enterprise: SD Planner™*](#)
- [*Transparency: A Path to Public Trust*](#)



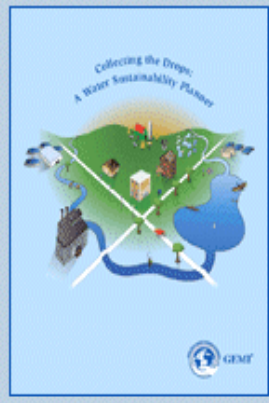
Download *Collecting the Drops* in PDF Format

Current GEMI Members



Other Important GEMI Tools

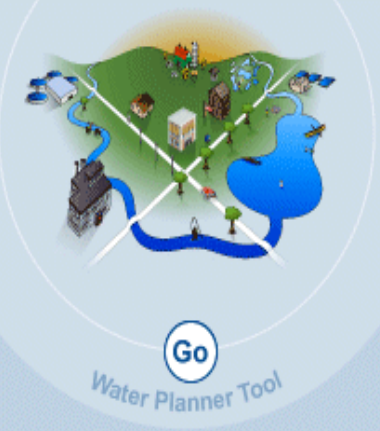
- [Connecting the Drops Towards Creative Water Strategies](#)
- [Exploring Pathways to Sustainable Enterprise: SD PlannerTM](#)
- [Transparency: A Path to Public Trust](#)



Download *Collecting the Drops* in PDF Format

Vision & Mission of GEMI

- **Vision:** *“To be globally recognized as a leader in providing strategies for businesses to achieve EHS excellence, economic success and corporate citizenship.”*
- **Mission:** *“Business helping business improve EHS performance, shareholder value and corporate citizenship.”*



Other Important GEMI Tools

- [*Connecting the Drops Towards Creative Water Strategies*](#)
- [*Exploring Pathways to Sustainable Enterprise: SD PlannerTM*](#)
- [*Transparency: A Path to Public Trust*](#)



Download *Collecting the Drops* in PDF Format

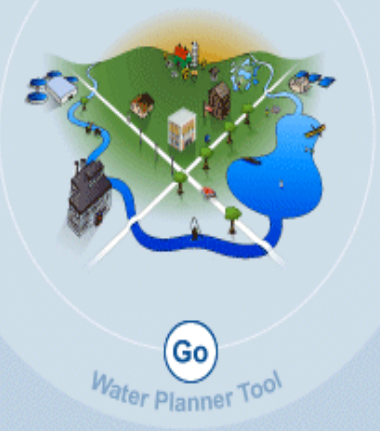
GEMI Leaders

GEMI 2007 Board of Directors

- ◆ **Chair:** Stan Christian, Motorola
- ◆ **Vice-Chair:** Bob Accarino, Abbott Laboratories
- ◆ **Finance Chair:** Karl Fennessey, The Dow Chemical Company
- ◆ **Membership Chair:** Leslie Montgomery, Southern Company
- ◆ **Benchmarking Chair:** Mark Hause, DuPont
- ◆ **Tools Work Group Chair:** Moe Bechard, JohnsonDiversey
- ◆ **Communications & Marketing Chair:** Kelley Kline, Smithfield Foods
- ◆ **Senior Advisory Council (SAC) Chair:** Jack Kace, Roche
- ◆ **Chair Emeritus:** Mitch Jackson, FedEx

GEMI Management

- ◆ **Steve Hellem**, Executive Director
- ◆ **Amy Goldman**, Director



Other Important GEMI Tools

- [*Connecting the Drops Towards Creative Water Strategies*](#)
- [*Exploring Pathways to Sustainable Enterprise: SD Planner™*](#)
- [*Transparency: A Path to Public Trust*](#)



Download *Collecting the Drops* in PDF Format

Current GEMI Activities

- 💧 Emerging Issues
- 💧 Communications & Marketing
- 💧 Business and Climate Change
- 💧 Information Management Systems (IMS)
- 💧 Metrics
- 💧 Strategic Futures
- 💧 Sustainable Development
- 💧 Tools Evaluation and Implementation Strategies
- 💧 Water Sustainability



Other Important GEMI Tools

- [Connecting the Drops Towards Creative Water Strategies](#)
- [Exploring Pathways to Sustainable Enterprise: SD PlannerTM](#)
- [Transparency: A Path to Public Trust](#)



Download *Collecting the Drops* in PDF Format

GEMI's Water Sustainability Work Group

💧 History:

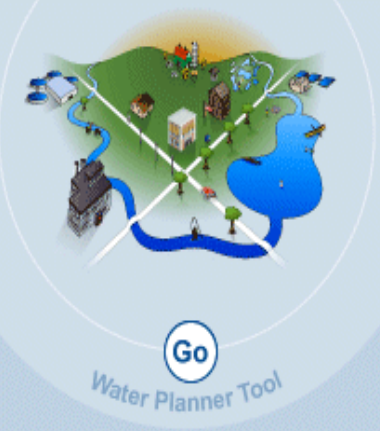
- 2000: Work Group formed and published *Connecting the Drops: Toward Creative Water Strategies* and supplemental web tool.
- 2003: Work Group reformed to develop *Collecting the Drops: A Water Sustainability Planner*

💧 **Objective:** To develop a detailed and comprehensive water sustainability-planning tool that can be used by a company to establish baseline performance, assess opportunities, set goals and evaluate progress against objectives

💧 GEMI Co-Chairs:

- Karl Fennessey, The Dow Chemical Company
- Paul Halberstadt, ConAgra Foods
- Harry Ott, The Coca-Cola Company

💧 **Consultant:** Gannett-Fleming



Other Important GEMI Tools

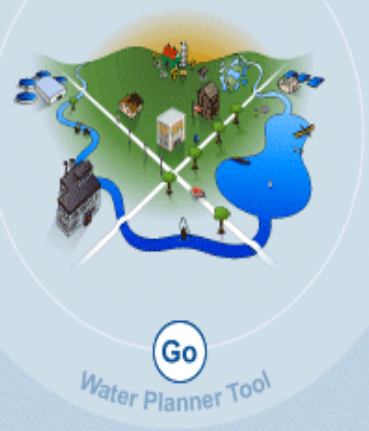
- [Connecting the Drops Towards Creative Water Strategies](#)
- [Exploring Pathways to Sustainable Enterprise: SD Planner™](#)
- [Transparency: A Path to Public Trust](#)



Download *Collecting the Drops* in PDF Format

Collecting the Drops: A Water Sustainability Planner Overview

- 💧 Introduction
- 💧 Module 1 – Facility Water Use and Impact Assessment Program
- 💧 Module 2 – Water Management Risk Assessment Questionnaire
- 💧 Module 3 – Case Examples and Reference Links
- 💧 Calculators – Calculation programs and References
- 💧 Reference – Definitions



Other Important GEMI Tools

- [Connecting the Drops Towards Creative Water Strategies](#)
- [Exploring Pathways to Sustainable Enterprise: SD PlannerTM](#)
- [Transparency: A Path to Public Trust](#)



Download *Collecting the Drops* in PDF Format

Introduction

💧 ***Collecting the Drops: A Water Sustainability Planner*** is segregated into 3 Modules that guide a facility user through the process of assessing the:

- Facility's relationship to water on a local and regional basis
- Identification of specific challenges and opportunities
- Identification of public, community and social considerations that could be taken into account

Other Important GEMI Tools

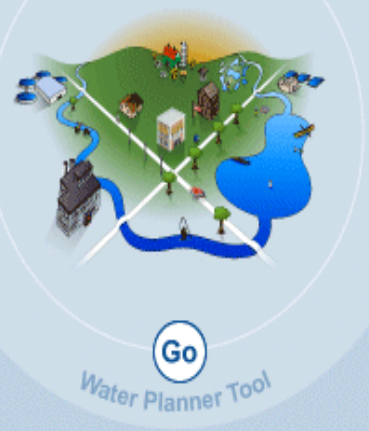
- [Connecting the Drops Towards Creative Water Strategies](#)
- [Exploring Pathways to Sustainable Enterprise: SD PlannerTM](#)
- [Transparency: A Path to Public Trust](#)



Download *Collecting the Drops* in PDF Format

Introduction (cont'd)

- The modules/programs assist the facility user in assessing the many circumstances that can affect the:
 - Adequacy and quality of the supply
 - Impact of the facility on the local water supply and water quality
 - Need for communication to increase awareness and community involvement to manage water resources wisely



Other Important GEMI Tools

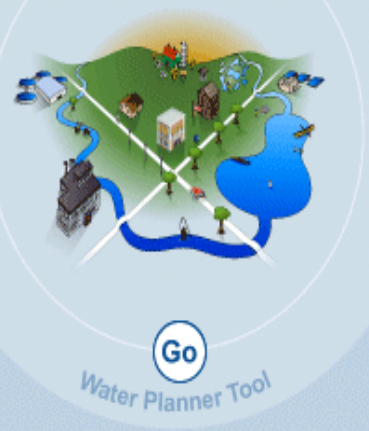
- [Connecting the Drops Towards Creative Water Strategies](#)
- [Exploring Pathways to Sustainable Enterprise: SD Planner™](#)
- [Transparency: A Path to Public Trust](#)



Download *Collecting the Drops* in PDF Format

Module 1: Water Use and Impacts

- ◆ First step in identifying overall facility water uses and impacts posed by the operations.
- ◆ Includes guidance for preparing a facility water block flow diagram.
- ◆ Define the process unit of interest, draw an imaginary dotted line around the process unit and identify and ultimately quantify the water inputs, water losses (to air, land and to product) and wastewater discharge. Lines should connect to each block (labeled with the name of the water-using process) and should include information of total water flow per unit time and water quality.



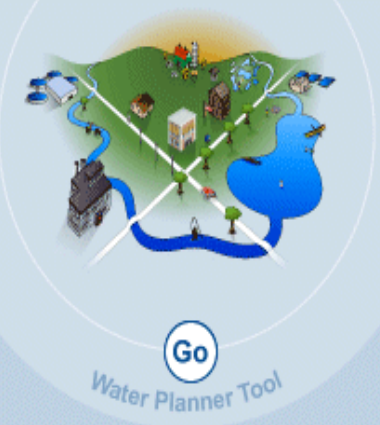
Other Important GEMI Tools

- [*Connecting the Drops Towards Creative Water Strategies*](#)
- [*Exploring Pathways to Sustainable Enterprise: SD PlannerTM*](#)
- [*Transparency: A Path to Public Trust*](#)



Download *Collecting the Drops* in PDF Format

Module 1: Example Block Flow Diagram

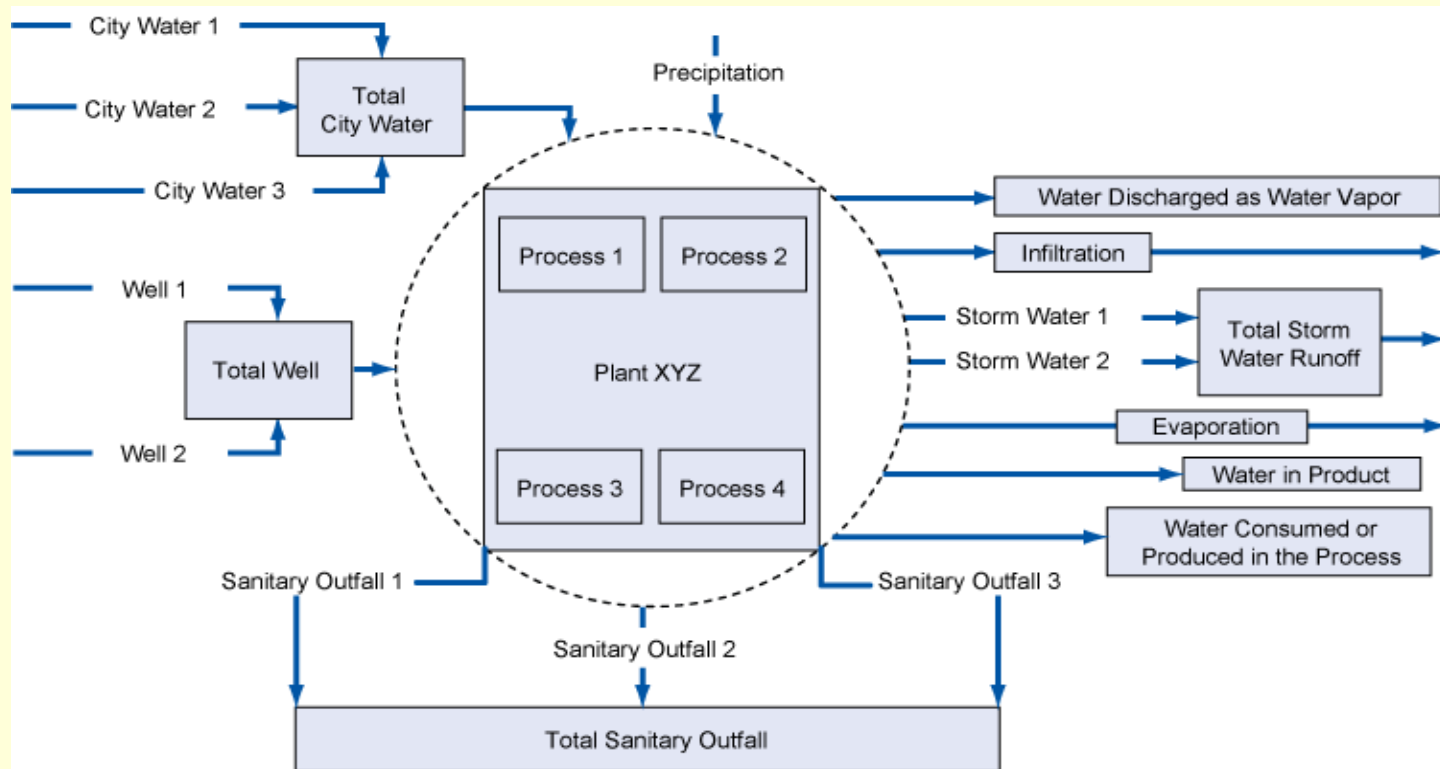


Other Important GEMI Tools

- [Connecting the Drops Towards Creative Water Strategies](#)
- [Exploring Pathways to Sustainable Enterprise: SD PlannerTM](#)
- [Transparency: A Path to Public Trust](#)

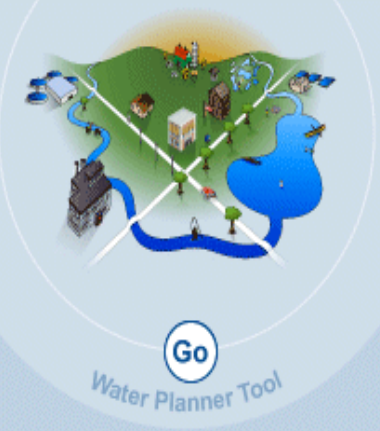


Download *Collecting the Drops* in PDF Format



Module 1: Water Balance Program

- The Water Balance Program includes 3 spreadsheets that require the following inputs:
 - Water supplied
 - Process/facility losses
 - Total volumes discharged or returned
- The Water Balance Program:
 - Calculates a result based on user input that will indicate a complete balance or a discrepancy (water unaccounted for).
 - Provides a percent closure result.
 - Provides acceptable margins of error based on discrepancy percentage versus average volume of water used



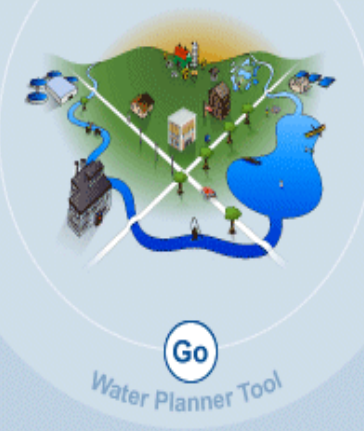
Other Important GEMI Tools

- [Connecting the Drops Towards Creative Water Strategies](#)
- [Exploring Pathways to Sustainable Enterprise: SD PlannerTM](#)
- [Transparency: A Path to Public Trust](#)



Download *Collecting the Drops* in PDF Format

Module 1: Water Balance Program (cont'd)



Other Important GEMI Tools

- [Connecting the Drops Towards Creative Water Strategies](#)
- [Exploring Pathways to Sustainable Enterprise: SD PlannerTM](#)
- [Transparency: A Path to Public Trust](#)



Download *Collecting the Drops* in PDF Format

GEMI: Collecting the Drops - Calculators - Microsoft Internet Explorer provided by Verizon Online

Address: <http://www.geodecisions.com/review/gemi/calc-waterbalance.asp>

Home Introduction **Module 1: Water Use and Impacts** Module 2: Water Management Risk Assessment Module 3: Case Examples and Links **Calculators** Reference

Calculators
Water Balance Program

Variable Definitions:
A: Input is Process/Facility Water Supply
B: Water Losses (e.g.: to air, land, and product)
C: Output is Wastewater Discharge

Input A: → **PROCESS UNIT** → Output C:

Losses B:

Water Supply Input

Purchased Water:	<input type="text"/>
Groundwater (Private Wells):	<input type="text"/>
Surface Water:	<input type="text"/>
Captured Water:	<input type="text"/>
Site Level Recycle/Reuse:	<input type="text"/>

Other Helpful Calculators

- [Fluid Flow Fundamentals](#)
- [Friction Loss & Flow](#)
- [Pump Hydraulic Horsepower](#)
- [Water Balance](#)
- [Why Waste Water](#)
- [Calculations](#)
- [Unit Conversion](#)
- ["Rules of Thumb"](#)

To print this calculator or to use it as a standalone file, please download the Excel format below. (Right-click on the link and select "Save Target As" to download it to your computer.)

[Download Excel format](#)

Module 1: Reference Links

💧 Includes Important Links for Reference:

- Case Example Calculations
- Engineering Calculations
- Water Balance Program
- Water Balance Case Example
- Water Management Risk Assessment Tool

Other Important GEMI Tools

- [Connecting the Drops Towards Creative Water Strategies](#)
- [Exploring Pathways to Sustainable Enterprise: SD Planner™](#)
- [Transparency: A Path to Public Trust](#)

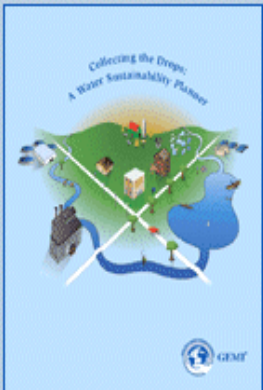


Download *Collecting the Drops* in PDF Format

Water Balance Calculator

💧 Includes Other Helpful Calculators and Reference Information:

- [Connecting the Drops Towards Creative Water Strategies](#)
- [Exploring Pathways to Sustainable Enterprise: SD Planner™](#)
- [Transparency: A Path to Public Trust](#)

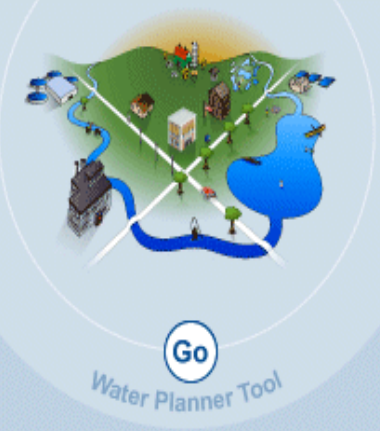


Download *Collecting the Drops* in PDF Format

- Fluid Flow Fundamentals
- Friction Loss and Flow
- Pump Hydraulic Horsepower
- Water Balance
- Why Waste Water
- Calculations
- Unit Conversion
- “Rules of Thumb”

Module 2: Water Management Risk Assessment

- Web-based interactive program in the form of a Water Management Risk Assessment Questionnaire
- Requires input of facility water considerations and input for levels of risk
- Water-related risk questions organized and presented in 6 risk categories



Other Important GEMI Tools

- [Connecting the Drops Towards Creative Water Strategies](#)
- [Exploring Pathways to Sustainable Enterprise: SD Planner™](#)
- [Transparency: A Path to Public Trust](#)



Download *Collecting the Drops* in PDF Format

Module 2: Water Management Risk Assessment (cont'd)

💧 Water Management Risk Assessment Questionnaire:

- Click on the “Please login” link on the right hand margin of the Module 2 page
- Create your username and password
- Review and accept the Global Environmental Management Initiative (GEMI) License Agreement



Other Important GEMI Tools

- [Connecting the Drops Towards Creative Water Strategies](#)
- [Exploring Pathways to Sustainable Enterprise: SD Planner™](#)
- [Transparency: A Path to Public Trust](#)



Download *Collecting the Drops* in PDF Format

Module 2: Water Management Risk Assessment Questionnaire

💧 User Login Screen:

GEMI: Collecting the Drops - Login - Microsoft Internet Explorer provided by Verizon Online

File Edit View Favorites Tools Help

Address <http://www.geodecisions.com/review/gemi/login.asp> Go Links >>

Home Introduction **Module 1: Water Use and Impacts** **Module 2: Water Management Risk Assessment** Module 3: Case Examples and Links Calculators Reference

Collecting the Drops: A Water Sustainability Planner Login

Disclaimer

Global Environmental Management Initiative (GEMI)

License Agreement

GEMI and Licensee hereby agree, effective on Licensee's opening of the Product, for good and sufficient consideration, as follows:

I Accept I Do Not Accept

[Create an account](#)

User Name:

Password:

Login

Logged in as: *Please login*

Available Actions:

- None

Download Collecting the Drops

Other Important GEMI Tools

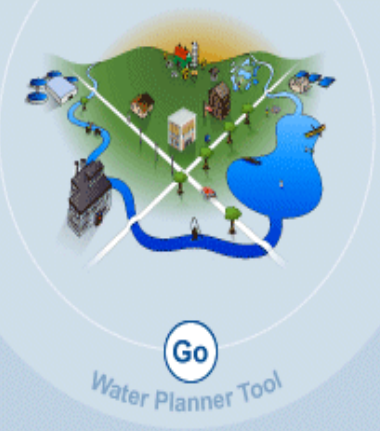
- [Connecting the Drops Towards Creative Water Strategies](#)
- [Exploring Pathways to Sustainable Enterprise: SD PlannerTM](#)
- [Transparency: A Path to Public Trust](#)



Download *Collecting the Drops* in PDF Format

Module 2: Water Management Risk Assessment Questionnaire (cont'd)

- ◆ Requires input from the facility user to answer general questions as well as specific vulnerability/risk questions
- ◆ Water use and impact questions have been organized and presented in the following 6 risk categories:
 - Watershed
 - Supply Reliability
 - Efficiency
 - Compliance
 - Supply Economics
 - Social Context
- ◆ Print the questionnaire by clicking on the “Print Entire Questionnaire” icon on the right-hand margin of the Module 2 page
- ◆ Review the questions and note your responses for future input into the web based questionnaire



Other Important GEMI Tools

- [Connecting the Drops Towards Creative Water Strategies](#)
- [Exploring Pathways to Sustainable Enterprise: SD Planner™](#)
- [Transparency: A Path to Public Trust](#)

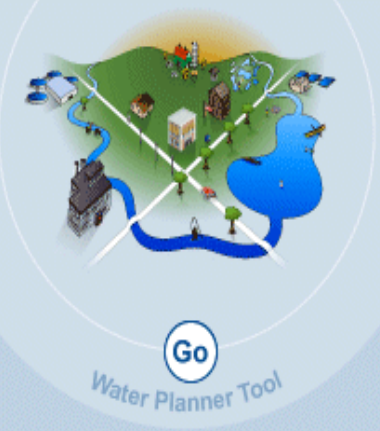


Download *Collecting the Drops* in PDF Format

Module 2: Water Management Risk Assessment Questionnaire (cont'd)

Results:

- ◆ Generates a table that includes a list of the general questions and responses given, the average risk ranking for the risk category answered and a summary of the highest risks to lowest risks in descending order. It also provides the risk score entered, the question number the score relates to and a link to GEMI member case examples that may prove helpful to the user in identifying options for reducing risk.
- ◆ Save questionnaire data by creating a user name & password
- ◆ Data is saved for 60 days
- ◆ May export and download into an MS Excel format



Other Important GEMI Tools

- [Connecting the Drops Towards Creative Water Strategies](#)
- [Exploring Pathways to Sustainable Enterprise: SD Planner™](#)
- [Transparency: A Path to Public Trust](#)



Download *Collecting the Drops* in PDF Format

Module 2: Water Management Risk Assessment Questionnaire (cont'd)

💧 Example Results Screen

Collecting the Drops: A Water Sustainability Planner Evaluation

Available Actions

- [Print Screen](#)
- [Edit Questionnaire Data](#)
- [View in Excel](#)
- [Goto Login Page](#)

Save Questionnaire Results

General Information

- List facility location:**
framingham
- List internal stakeholders (environmental manager, maintenance personnel, plant manager, shift supervisors, production manager, utilities manager, public affairs, regulatory affairs, community liaison, other)**
John Doe, Frank Wright,

Category	Average Ranking
Efficiency	4
Supply Economics	3.8
Compliance	3.25
Social Context	2.91
Supply Reliability	2.89
Watershed	1.8

Watershed

General Information

- Enter the name of the watershed that the facility relies on for its water supply. This would be the watershed that the water is withdrawn from by the supplier or through private withdrawals from groundwater or surface water.**

Other Important GEMI Tools

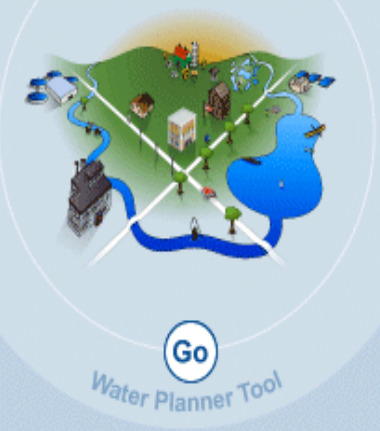
- [Connecting the Drops Towards Creative Water Strategies](#)
- [Exploring Pathways to Sustainable Enterprise: SD Planner™](#)
- [Transparency: A Path to Public Trust](#)



Download *Collecting the Drops* in PDF Format

Module 3: Case Examples and Reference Links

- Provides a database of case examples provided by GEMI members that have been used in a wide range of industry sectors to manage water wisely.
- Contains reference links that provide specific water-related information.
- Can be used to identify case examples that may apply to your facility with the intent to improve overall water resource management within the facility and in the community.
- Case Example Category Filtering
- Click on a Community Map Sector or Case Example Category to access the filtering option.
- Filter the links of interest for the desired result.



Other Important GEMI Tools

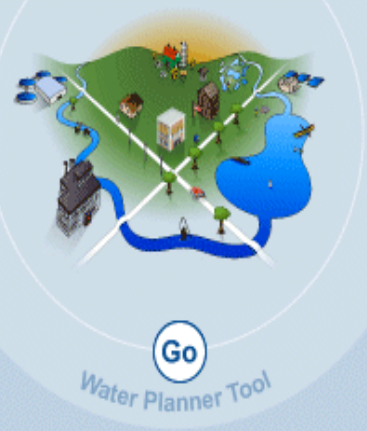
- [Connecting the Drops Towards Creative Water Strategies](#)
- [Exploring Pathways to Sustainable Enterprise: SD Planner™](#)
- [Transparency: A Path to Public Trust](#)



Download *Collecting the Drops* in PDF Format

Module 3: List of Case Example Categories in the Database

- ◆ Advocacy Management Techniques
- ◆ Community Outreach
- ◆ Development Impact
- ◆ External Stakeholder Discussion Guidelines
- ◆ Global Awareness and Education
- ◆ High Purity Water Systems
- ◆ Housekeeping
- ◆ Innovative Water Reuse/Recycle Approaches
- ◆ Innovative Water Conservation Approaches
- ◆ NGO Interaction Guidance
- ◆ Pretreatment
- ◆ Waste Reduction/Minimization
- ◆ Wastewater Treatment Systems
- ◆ Water Access
- ◆ Water Management Operational Practices
- ◆ Water Quality Standards
- ◆ Water Quantity/Allocations
- ◆ Water Treatment Systems
- ◆ Watershed Management/Reclamation
- ◆ Zero Discharge



Other Important GEMI Tools

- [Connecting the Drops Towards Creative Water Strategies](#)
- [Exploring Pathways to Sustainable Enterprise: SD PlannerTM](#)
- [Transparency: A Path to Public Trust](#)

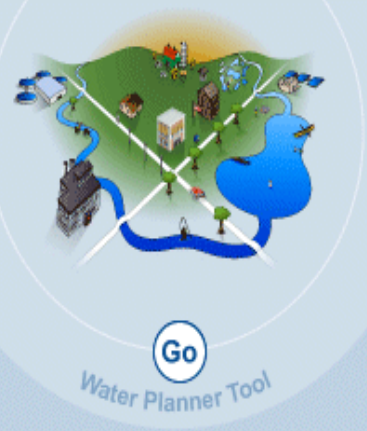


Download *Collecting the Drops* in PDF Format

Module 3: Case Examples

The following GEMI Companies provided case examples:

- ◆ 3M
- ◆ Abbott Laboratories
- ◆ Anheuser-Busch Inc.
- ◆ Ashland Inc.
- ◆ The Coca-Cola Company
- ◆ ConAgra Foods
- ◆ The Dow Chemical Company
- ◆ DuPont
- ◆ Eastman Kodak Company
- ◆ GlaxoSmithKline
- ◆ Johnson Controls, Inc.
- ◆ Kraft Foods, Inc.
- ◆ Occidental Petroleum Corporation
- ◆ Pfizer, Inc
- ◆ The Procter and Gamble Company
- ◆ Roche
- ◆ Southern Company
- ◆ Texas Instruments Inc.
- ◆ Tyson Foods, Inc.



Other Important GEMI Tools

- [*Connecting the Drops Towards Creative Water Strategies*](#)
- [*Exploring Pathways to Sustainable Enterprise: SD Planner™*](#)
- [*Transparency: A Path to Public Trust*](#)



Download *Collecting the Drops* in PDF Format

Module 3: The Community Map

- The Community Map is segregated into three sectors: Industry, Community and Natural Resources.
- The user can mouse over and click the sector of interest and access case examples that relate to that sector.



Other Important GEMI Tools

- [Connecting the Drops Towards Creative Water Strategies](#)
- [Exploring Pathways to Sustainable Enterprise: SD Planner](#)
- [Transparency: A Path to Public Trust](#)



Download *Collecting the Drops* in PDF Format

Calculators Tab

- 💧 Fluid Flow Fundamentals
- 💧 Friction Loss & Flow
- 💧 Pump Hydraulic Horsepower
- 💧 Water Balance Program
- 💧 Calculations
- 💧 “Rules of Thumb”
- 💧 Conversions

Other Important GEMI Tools

- [Connecting the Drops Towards Creative Water Strategies](#)
- [Exploring Pathways to Sustainable Enterprise: SD Planner™](#)
- [Transparency: A Path to Public Trust](#)



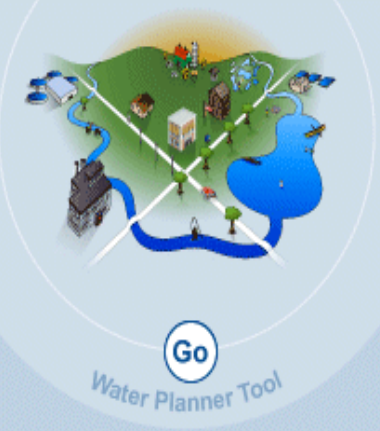
Download *Collecting the Drops* in PDF Format

Reference Tab

● Provides definitions of terms used in the document and web tool.

● Provides an overview of the following subjects:

- General Water Rate Considerations
- Governance and Regulation Inputs
- Risk and Uncertainty
- Water Use and Sustainability



Other Important GEMI Tools

- [Connecting the Drops Towards Creative Water Strategies](#)
- [Exploring Pathways to Sustainable Enterprise: SD PlannerTM](#)
- [Transparency: A Path to Public Trust](#)



Download *Collecting the Drops* in PDF Format

Conclusion

- ◆ Water management is a complex issue for any organization. This tool, along with GEMI's other tools, is meant to assist users along their journey to use water sustainably. While the tool does not cover every detail needed, it covers many of the areas that GEMI member companies consider crucial.
- ◆ The user is encouraged to generate a water sustainability strategy for their operation, set goals and measure progress in meeting those goals.

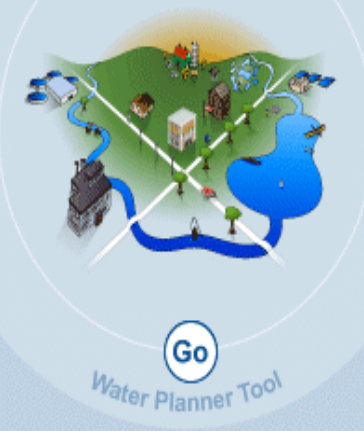
Other Important GEMI Tools

- [Connecting the Drops Towards Creative Water Strategies](#)
- [Exploring Pathways to Sustainable Enterprise: SD Planner™](#)
- [Transparency: A Path to Public Trust](#)



Download *Collecting the Drops* in PDF Format

GEMI's Collecting the Drops: A Water Sustainability Planner web tool



Other Important GEMI Tools

- [Connecting the Drops Towards Creative Water Strategies](#)
- [Exploring Pathways to Sustainable Enterprise: SD PlannerTM](#)
- [Transparency: A Path to Public Trust](#)



Download *Collecting the Drops* in PDF Format

GEMI: Collecting the Drops - Home Page - Microsoft Internet Explorer


File Edit View Favorites Tools Help

Address <http://www.gemi.org/waterplanner/>




Collecting the Drops: A Water Sustainability Planner

Home
Introduction
Module 1:
Water Use and Impacts
Module 2:
Water Management Risk Assessment
Module 3:
Case Examples and Links
Calculators
Reference



Collecting the Drops: A Water Sustainability Planner Home


User Login 

Existing Users

New Users

Welcome to *Collecting the Drops: A Water Sustainability Planner* tool!

Business risk and opportunity assessments have evolved to include analyses of water use, impact of use and "license to operate" considerations. These assessments are used to create short- and long-term water sustainability strategies. *Collecting the Drops: A Water Sustainability Planner* is a tool segregated into three Modules that guides a facility user through: the process of assessing the facility's specific water uses/needs in comparison to the availability of water in the region; the impacts these operations pose on the available water resources; and the identification of factors that may pose a risk on the operation's ability to produce. Case examples of how GEMI members have identified opportunities to efficiently manage water resources are also provided.




The facility case for understanding water use... is becoming an essential part of business assessments.

There are several factors that, when all summed up, form an operation's relationship to water. These factors can include such items as: the quality and quantity of water available for use, the cost of water, environmental sensitivities of the region, current/projected community development and the adequacy of the current infrastructure.

Regions throughout the world are experiencing significant water shortages. Population shifts to coastal regions, smaller towns and cities adjacent to large cities have stressed existing suburban infrastructure and required agencies to impose further restrictions or cost sharing with users. However, growth can occur without further stress on water resources and there are several cases of sustainable growth in water "limited" areas. In parallel, the cost of water has increased, and will likely continue to increase around the world driven by demand for high quality water and limits on the resources. Water conservation efforts have been imposed in many areas throughout the world and require groundwater and surface water use allocation permits.

The document and this web site have been developed to provide facility staff or operating division staff the tools and guidance to perform an assessment of their facility's water use and the impacts on the local or regional water supply. Guidance and individual programs are provided to assist the user in understanding



Other Important GEMI Tools

- [Connecting the Drops Towards Creative Water Strategies](#)
- [Exploring Pathways to Sustainable Enterprise: SD PlannerTM](#)
- [Transparency: A Path to Public Trust](#)



Download *Collecting the Drops* in PDF Format

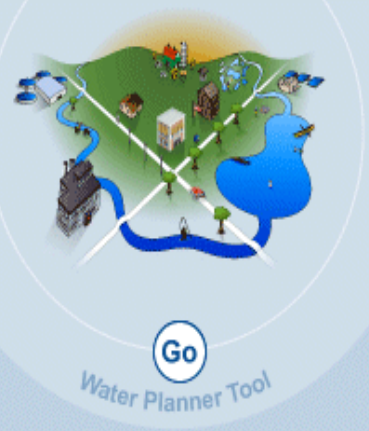
GEMI
 1155 Fifteenth Street, NW,
 Suite 500
 Washington, DC 20005
 Phone: 202-296-7440

How to Contact GEMI:

Steve Hellem, Executive Director
Amy Goldman, Director

1155 Fifteenth Street, NW, Suite 500
Washington, DC 20005
Phone: 202-296-7449
Fax: 202-296-7442
info@gemi.org

<http://www.gemi.org/waterplanner>



Other Important GEMI Tools

- [Connecting the Drops Towards Creative Water Strategies](#)
- [Exploring Pathways to Sustainable Enterprise: SD Planner™](#)
- [Transparency: A Path to Public Trust](#)



Download *Collecting the Drops* in PDF Format