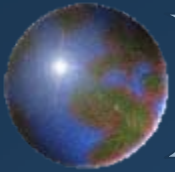


GEMI Factoid Benchmark Survey

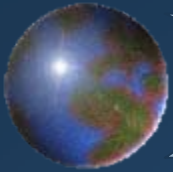
April 2005

Bob Accarino
Abbott Laboratories
GEMI Benchmarking Chair

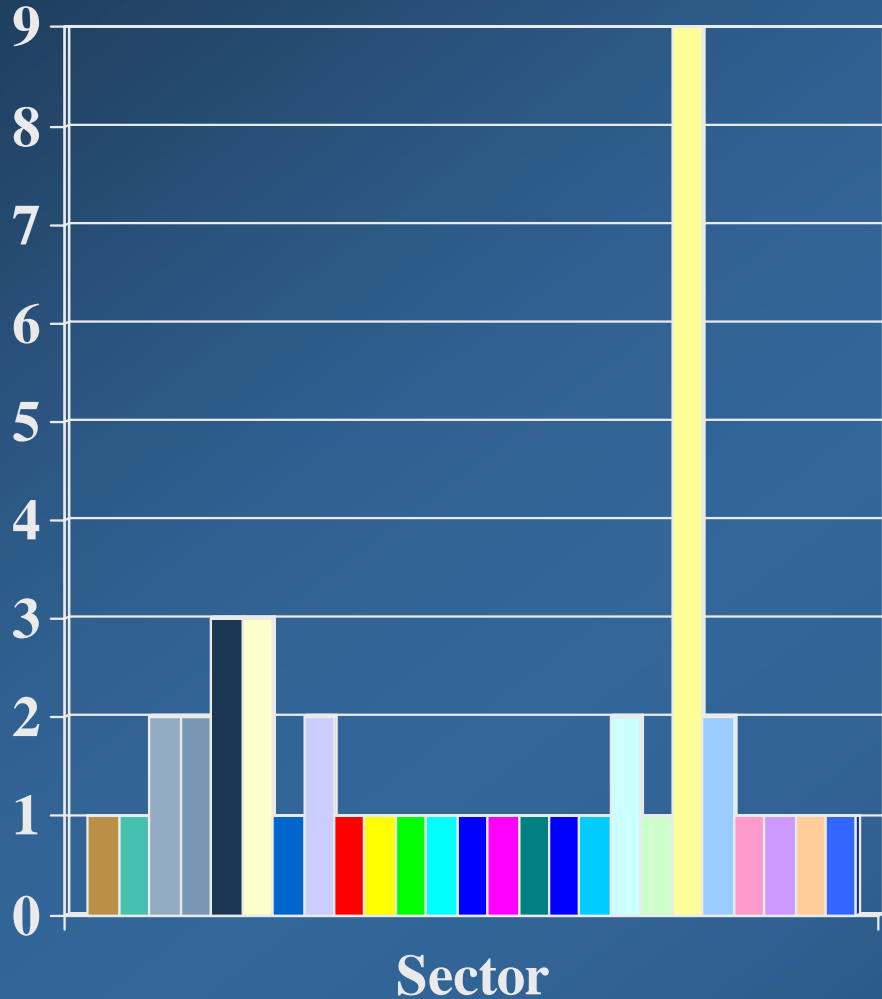


Survey Overview

- Response rate was 85.7% (36 of 42 companies)
- There was good coverage across the sectors represented in GEMI
- Thank you to all participants!

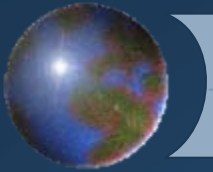


Industrial Sectors



- Aerospace/Information Technology
- Automotive
- chemicals
- Computers & electronic products
- Consumer Food Products
- Consumer Products
- Diversified Industrial Goods and Services
- Electric Utility
- Electronics
- Energy
- Food Processor/Hog Production
- Food/Agri Industry
- Forest Products
- Health Care
- Health Care Products
- Imaging Products & Services
- Industrial & Institutional Appearance Protection
- Oil and Gas Production
- Packaging
- Pharmaceuticals
- Semiconductor
- Transportation
- Transportation Construction, Chemical and Petroleum
- Transportation Service
- Travel & Leisure (Cruise)

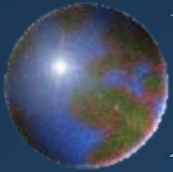




List of Industry Sectors

- Aerospace/Information Technology
- Automotive
- Chemicals
- Computers & electronic products
- Consumer Food Products
- Consumer Products
- Diversified Industrial Goods and Services
- Electric Utility
- Electronics
- Energy
- Food Processor/Hog Production
- Food/Agri Industry
- Forest Products
- Health Care
- Health Care Products
- Imaging Products & Services
- Industrial & Institutional Appearance Protection
- Oil and Gas Production
- Packaging
- Pharmaceuticals
- Semiconductor
- Transportation
- Transportation Construction, Chemical and Petroleum
- Transportation Service
- Travel & Leisure (Cruise)

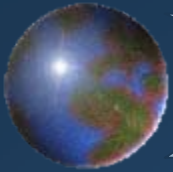




Totals: Revenue, Employees & Facilities Worldwide

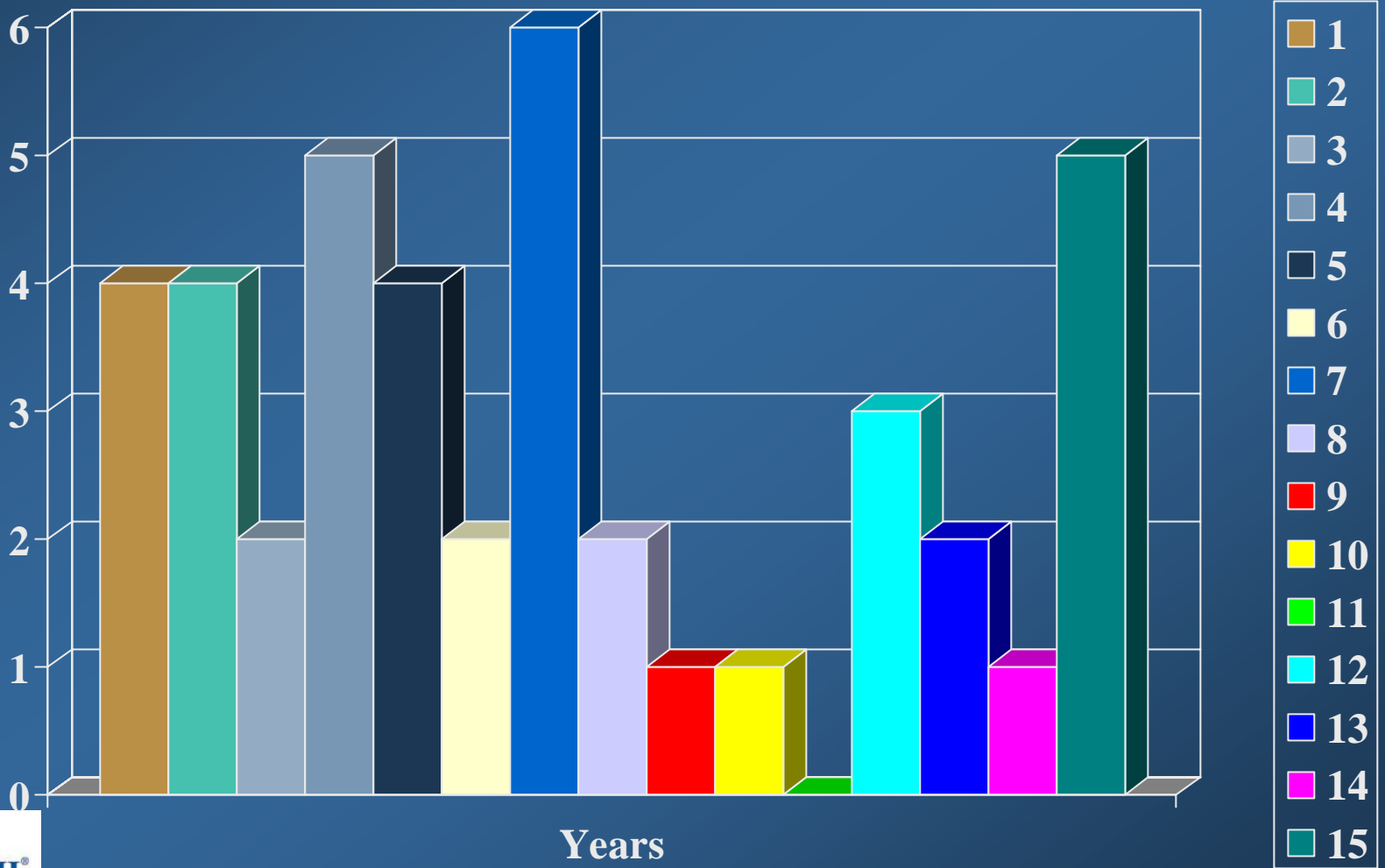
- Annual Sales: more than \$915 billion USD*
- Global Headcount: more than 2.5 million
- Number of Manufacturing Facilities Worldwide: more than 3,034

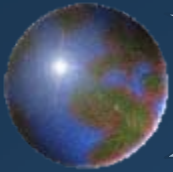
**NOTE: All GEMI members' annual sales were included in this figure*



Years in GEMI

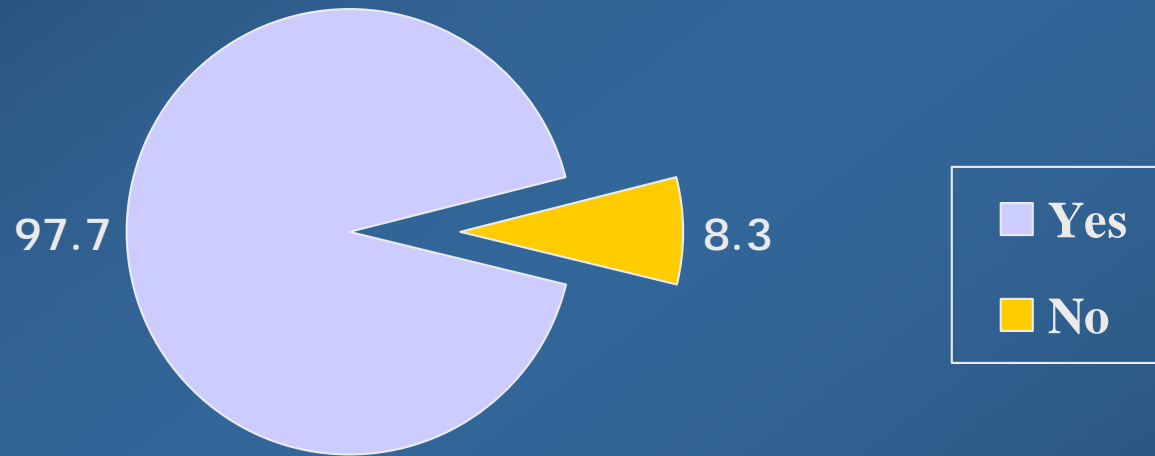
Average number of years in GEMI is 7.09





*2004-2005 Tsunami Relief**

Was Your Company Involved in the Tsunami Relief Effort?



- Total financial contributions: + \$41.138 million
- Total product donations: + \$59.627 million
- Total other donations/in-kind assistance: + \$5,807,232

**NOTE: Not all GEMI members chose to participate in this portion of the survey*